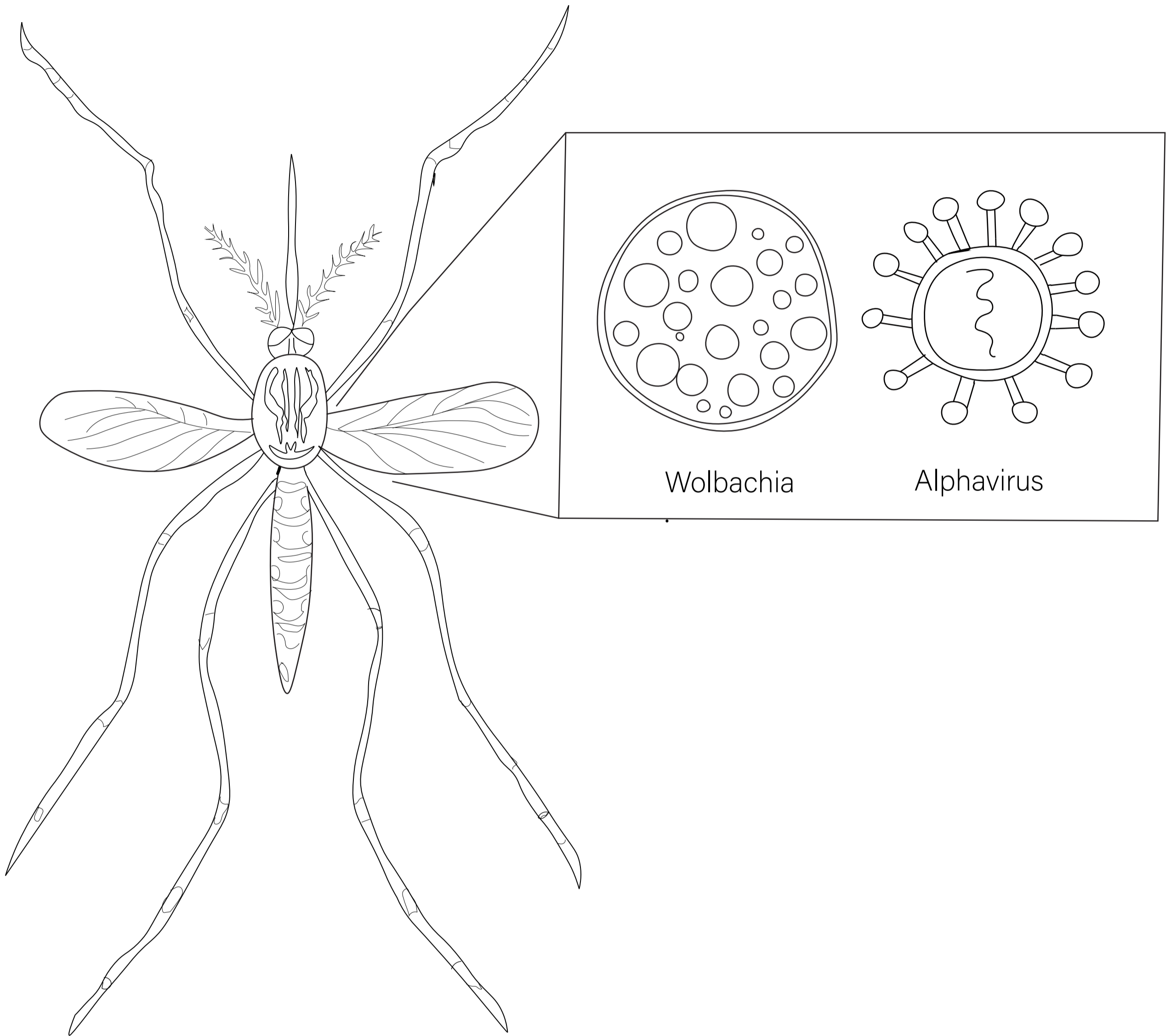


THE HARDY LAB



The Hardy lab studies alphaviruses at Indiana University. Alphaviruses are spread by mosquitoes and cause disease in humans. Wolbachia are bacteria that live inside 40-60% of insects (that's a lot!) and are able to inhibit the replication of alphaviruses and other viruses, like Zika virus. In the Hardy lab, we are interested in how Wolbachia does this.

Illustrations provided by Dr. Tamanash Bhattacharya from the Hardy lab.